



# Installing Team Viewer

*Installation Procedure*

Version 2

01/26/2016 hma

Copyright © 2016 – AMS Controls, Inc. All rights reserved.

The information contained in this document is proprietary to AMS Controls, Inc., and is not to be reproduced in any form without the specific written authorization of AMS Controls, Inc.

AMS Controls, Inc. reserves the right to change the contents of this manual without customer notice or permission. Although every effort is made to ensure the correctness of this manual, it should be noted that AMS Controls, Inc. is not responsible for personal or equipment damage caused by the contents of this manual. It is not the intent of this manual to cover every possible revision or version of the controller. For specific controller questions, contact AMS Controls Inc.

AMS Controls, Inc.  
12180 Prichard Farm Road  
Maryland Heights, MO 63043

314.344.3144 – 1.800.334.5213 (US & Canada) – fax: 314.344.9996 – [info@amscontrols.com](mailto:info@amscontrols.com)

[www.amscontrols.com](http://www.amscontrols.com)

## **Table of Contents**

INSTALLING TEAM VIEWER .....	1
<b>CHAPTER 1: EQUIPMENT REQUIRED .....</b>	<b>3</b>
<b>CHAPTER 2: TEAM VIEWER INSTALL .....</b>	<b>4</b>



# **Chapter 1: Equipment Required**

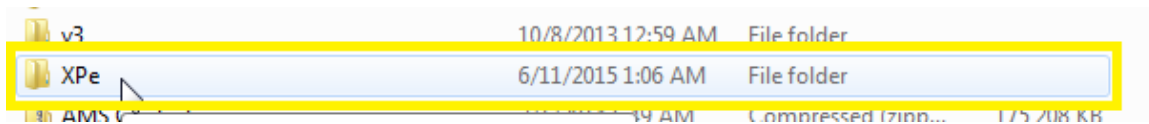
---

- USB Removable Drive

## Chapter 2: Team Viewer Install

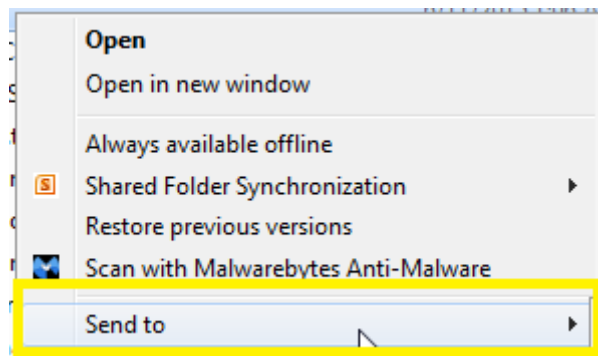
---

1. Insert USB into any port on PC.
2. Follow path N:\Engineering\Pathfinder\XPe\rootspud.exe
3. Right click on the link (highlighted in Figure 1).



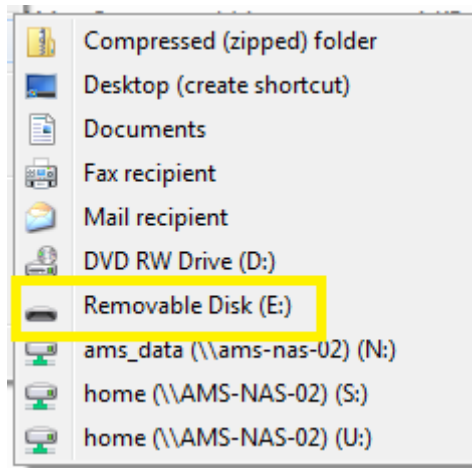
**Figure 1: Right Click the Link**

4. Select Send To (highlighted in Figure 2).




**Figure 2: Send To**

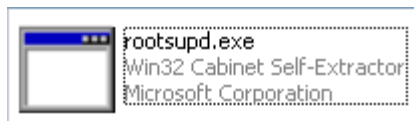
5. Choose the USB removable (highlighted in Figure 3).




**Figure 3: Removable Disk**

 NOTE: It doesn't matter the letter as long as Removable Disk is chosen.

6. Close window
7. Remove USB drive from computer.
8. Locate Pathfinder PF PC.
9. Disable Write Filter.
10. Insert USB drive into any of the USB ports on the back of the Pathfinder PF PC.
11. Install the **rootsupd.exe** (N:\Engineering\Pathfinder\XPe\rootsupd.exe) by moving it to the desktop and double-clicking the icon.



**Figure 4: rootsupd Icon**

 NOTE: There's no visible indication that the install happened, so just wait 10 seconds after double-clicking the .exe before proceeding to the next step.

12. Copy **TeamViewerQS.exe**

(<http://download.teamviewer.com/download/TeamViewerQS.exe>) to the same location where it is on the new PCs: the **Pathfinder Tools** folder on the Desktop.



**Figure 4: TeamViewerQS Icon**

13. Enable the Write Filter.

**Install Complete!**